



# NEWS ABOUT THE REGENERATION OF SOUTH ACTON

September 2025  
Issue 43



**Welcome to the 43rd edition of the Acton Gardens newsletter. Here you'll find updates to keep you involved and informed throughout the regeneration of South Acton.**

**In this issue:**

- Acton Gardens Community Board update
- Phasing update
- Community Chest update
- Social Life Report
- Bollo Brook Youth Centre update
- Acton Gardens Community Centre
- South Acton Children's Centre and Nursery Update
- Sustainability Corner
- Activity page
- L&Q Resident Assembly
- Met Engage
- Housing Management: Your L&Q Neighbourhood Team
- Contact us

# ACTON GARDENS COMMUNITY BOARD UPDATE

## **The Community Board oversees the regeneration of the South Acton estate by:**

- Providing feedback on the regeneration
- Ensuring there is continued community involvement
- Encouraging participation from groups currently under-represented
- Allocating Community Chest funding for local projects
- Attending quarterly Board meetings with local stakeholders
- Attending tours, training, subgroups, and consultation events for feedback
- Reviewing literature, communications and messages circulated to the community.

Community Board (AGCB) meetings are from 6pm till 8.15 pm. For full details of the meetings, please find the minutes at the bottom of the Community Board page on our website **<https://www.youractongardens.co.uk/community-board>**

The next Community Board meeting is scheduled for Monday 8 September, where residents are welcome to observe in person at Acton Gardens Community Centre, or online through Microsoft Teams.

If you would like to join online, please contact a member member of the Communities Team.

If you have any questions or would like to find out more about the work of the Acton Gardens Community Board, please send an email addressed to the Community Board to **[Y@lqgroup.org.uk](mailto:Y@lqgroup.org.uk)**.

## **A warm welcome to our new Community Board Member – Meet Daniela!**

I am very excited to have the opportunity to join the Acton Gardens Community Board! I have become a resident of Acton Gardens in April 2021 and I find myself in a position to be able to contribute to the community by volunteering my time, skills and knowledge to hopefully make a difference to the residents.

I have 25 years of work experience in the Finance, Operations and Investments departments of big corporate companies and large financial institutions. I am a qualified accountant and certified financial analyst and I hope these skills could benefit the board both on the Community Chest work they are doing but also on the housing management side.

Currently I work as a Business Manager in Legal and General and I look after the financial, human, and technical resources allocations for the Investments Department. I am also involved in the more soft/fun side of things, and I am organising team social events, health & wellness awareness, and relevant skills training.

I have watched the transformation of Acton Gardens since I first visited 4 years ago, and I am very excited of the positive effects the regeneration programme has on the area and the community and I would like to get actively involved and make a difference wherever possible to the wellness of my neighbours and the larger community.



The Acton Gardens Community Board (AGCB) is the formal resident involvement structure between the residents of Acton Gardens and South Acton and L&Q, Countryside and Ealing Council.



## Acton Gardens Community Board: Youth member position

### You live here, you lead here!

Join the Acton Gardens Community Board as a youth member and help shape the future of your neighbourhood.

### As a Youth Board Member, you'll:

- Shape real decisions about housing, public spaces, and community services
- Represent young voices in meetings with industry professionals and local leaders
- Gain experience in leadership and public speaking
- Boost your CV
- Network with professionals and community figures.

### Who are we looking for?

- Aged 18 - 25
- Live in South Acton/Acton Gardens
- Passionate about your community
- No experience needed, we will support you every step of the way!



### Apply Now!

Click on the button below or scan the QR code

[CLICK HERE](#)

# PHASING UPDATE

In the interest of reducing our carbon footprint and offering a more sustainable and environmentally friendly newsletter, details relating to all the development phases including any updates will be provided via the **Acton Gardens website** at :

<https://www.youractongardens.co.uk>



## MEM ACADEMY SPOTLIGHT: SAJID'S JOURNEY OF GROWTH AND TRANSFORMATION

WRITTEN BY DERRICK THUM, MEM FITNESS

**Meet Sajid – Age 18**

**Joined MEM Academy: December 2022**

When Sajid first walked through the doors of MEM Academy, he was facing some serious challenges—both physically and emotionally. At just 16, Sajid was struggling with anger, getting into fights, and heading down a path he now regrets. But with the support of mentors Mojo and Leon, Sajid has completely transformed his mindset and his future.

"The boxing sessions were tough at first," he says. "But nothing I couldn't handle with the right guidance."

### From Anger to Awareness

Before joining MEM, Sajid often found himself in conflict—both internally and with others. He admits to being surrounded by the wrong crowd, acting out, and getting into trouble with the police. But boxing, mentorship, and a supportive environment gave him the space to reflect and grow.

"MEM helped me realise when I needed to protect myself—and when I didn't. I've learned how to stay calm and make better choices."

Training in a focused, personalised space has given Sajid the confidence to take control of his emotions and build himself up—mentally and physically.

### Redefining His Future

Sajid now feels stronger, more disciplined, and far more hopeful. He's made a clear decision to leave his old habits behind and focus on building a future he can be proud of.

"I regret the trouble I got into, but MEM opened my eyes. That's not the life I want anymore."

Now, Sajid is driven by purpose. He wants to help others—especially young people—avoid the mistakes he made. His goals include finishing sixth form, pursuing a career in banking, and becoming a part-time boxing or fitness coach to support others on their journey.

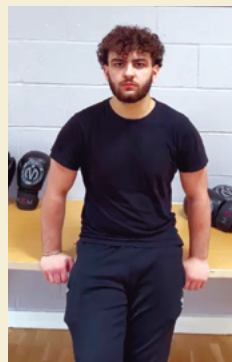
### Why MEM Matters

What makes MEM Academy stand out for Sajid is

the sense of **community** and **belonging**. Being surrounded by mentors with lived experience, and peers who share his values, has helped him feel understood, supported, and inspired.

"I've learned to speak to the right people. MEM gives you real conversations, real support, and the tools to grow."

Sajid's journey is just beginning—but already, he's proof of what's possible when young people are given the right space to thrive. We're proud to be part of his transformation—and excited to see where he goes next.



**"I've learned to speak to the right people. MEM gives you real conversations, real support, and the tools to grow."**

## INTERESTED IN APPLYING OR WANT TO FIND OUT ABOUT PAST PROJECTS?



If you have a project that could benefit your community, we encourage you to apply! Visit [www.yoursouthacton.co.uk/community-chest](http://www.yoursouthacton.co.uk/community-chest) to find out more. Application deadlines for the quarterly funding rounds in 2025 are also published on our website.

### Share your ideas!

Have a project you'd love to see funded or suggestions to improve our current model? We'd love to hear from you!

# SOCIAL LIFE



## **On 9th June 2025, the Acton Gardens Community Board came together for its quarterly meeting - but this time with a twist!**

Rather than following the usual agenda, the session was led by Social Life, an organisation dedicated to understanding the dynamic relationship between people and the places they live. With a strong focus on research and community engagement, Social Life explores how changes in the built environment impact everyday lives.

This is the fourth round of this research in the past decade, building on previous social sustainability assessments in 2015, 2018 and 2020. The research took place between November 2023 and April 2024 and was commissioned by Acton Gardens LLP. The aim of the research is to explore the social impacts of regeneration as the development progresses, to capture change over time for people living in different circumstances and different parts of the estate, and to understand how local priorities and needs can influence future phases of planning, design and management.

The meeting allowed board members and attendees to take a first look into the findings of the 2023–2024 Social Life Study, shedding light on how residents are feeling about the transformation of the neighbourhood. The report highlights strengths within the Acton Gardens Development, such as a

strong and increasing majority of residents feeling positive about the regeneration plans. It also outlines areas of improvement– such as a widening gap between those on new areas and old areas of the estate. It also revealed residents' new top priority: safety. The findings and recommendations from the Social Life study will be used to drive positive change in South Acton – and we are already looking forward to the results of the next one.

### **The Report can be found here:**

<https://www.youractongardens.co.uk/storage/app/media/2025%20published/final-south-acton-summary-print-copy.pdf>



## **BOLLO BROOK YOUTH CLUB UPDATE**



As the weather has improved, at Bollo Brook Youth Centre we have been making the most of it, moving activities out of our building more, including holding two BBQs for young people. We have also been preparing for the summer ahead, including taking a leading role again on the youth-led New Gen Festival in Walpole Park, where young people from the youth centre will take centre stage in organising and performing at this event for thousands of young people from across west London. As part of the run up to this, we ran a rap cypher at ActOne Cinema in partnership with the Spit Game UK, the first in a series of events, trips and activities that we will be running throughout the summer.

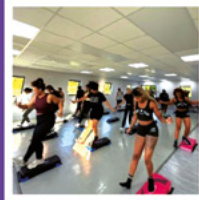
Other activities have included finishing our Community Chest-funded art and film project exploring community in South Acton and working with tutors from Heatherley's School of Fine Art to introduce new techniques and materials in young people's art making. We hope to be able to showcase the results of both projects over the next few months, alongside a short film made with Carlotta Beck Peccoz, Our New Home, that premiered at the BFI Imax as part of the Straight 8 Film Festival.

## ACTON GARDENS COMMUNITY CENTRE



# STEP N FLEX

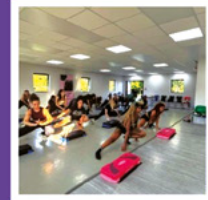
# Join us For Step Class!



**BEGINNER-FRIENDLY & FUN**



**GREAT FOR WEIGHT LOSS**



**EVERYONE IS WELCOME**

ARE YOU READY TO STEP UP YOUR FITNESS GAME?! JOIN OUR STEP CLASS AND GET YOUR HEART PUMPING, BURN CALORIES, AND HAVE FUN WHILE MOVING TO GREAT MUSIC.



@STEP\_N\_FLEX

### CONTACT US:

INSTAGRAM: @STEP\_N\_FLEX  
TIKTOK: @STEP\_N\_FLEX  
FACEBOOK: STEP 'N' FLEX  
07984075188

Monday and Tuesday  
7pm - 8pm  
Hewens College Hayes UB8 8JP

Friday  
6pm - 7pm  
Acton Gardens Community Centre W3 8UU

<https://stepnflex.setmore.com/>

## EID CELEBRATIONS AT ACTON GARDENS

LDT and Acton Youth Association held their Eid Celebrations on **Sunday 15 June 2025** in partnership with L&Q. The event had a great turnout, it was a wonderful display of community.



Eid Mubarak in full swing



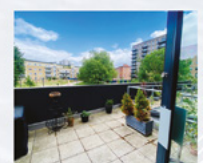
**ACTON GARDENS** | COMMUNITY CENTRE



Support your local community by choosing an affordable & friendly local workspace at the Acton Gardens Community Centre - office away from home. stay local for your next event or meeting!

At our non-profit organization, all money is reinvested locally for the benefit of the community. You can freely leave your belongings in secure lockers and feel at home while meeting other locals and expanding your network.

Enjoy discounted venue hire at all LDT locations and take advantage of our low-cost private meeting rooms.



For more information, or to book a tour of the space please contact [info@actongardens.community](mailto:info@actongardens.community) or call 020 8075 5240

# SOUTH ACTON CHILDREN'S CENTRE AND NURSERY (SACC) UPDATE

## A VISIT FROM NEW NORWEGIAN FRIENDS!



One sunny afternoon in September 2024, South Acton Children's Centre (SACC) received an exciting email from Kornberget Barnehage, a nursery school in Norway. The team had read an article featuring our Headteacher, Seibina Downes, and were inspired by our inclusive approach to supporting children with varied learning differences.

Like many nurseries across Europe, Kornberget Barnehage has seen a rise in children with additional needs since the pandemic. Keen to learn from our practice, they arranged a professional visit—part of their biannual international development programme.

Ahead of the visit, children from both nurseries exchanged drawings and learned about each other's countries. Our children discovered where Norway is, how to say "hello" in Norwegian, and what the flag looks like.

When the day arrived, 23 staff from Kornberget Barnehage came straight from the airport, suitcases in hand and eager to explore our nursery and children's centre. They observed learning in action, interacted with staff and children, and explored our inclusive teaching methods that promote independence through play.

The team from Norway were very impressed with our continuous provision of resources, how we support a diverse community, how we work with children with learning differences both within our mainstream bases and in our specialist provision. They were especially interested in how we support our most vulnerable children – those with special educational needs and disabilities (SEND), children with English as an additional language (EAL), and those on child protection plans. They were also keen to see how things like Makaton signing, sensory stories, and trauma-informed approaches are used to engage children and support families.

During the visit, we discovered many shared challenges—rising living costs, fuel poverty, and the impact of these on families. Both schools also noted similar concerns around children's behaviour, mental health, and toilet training..

Janne said the visit offered valuable insights, especially around supporting children with autism (ASD). She said: "This is what we can do in our base. It's been so inspiring."

Seibina said: "I would love to go to Norway and it was clear how bonding it was for the Norwegian team. They all came in chatting – it's great for emotional and social development. Even though we live on different sides of the water, we share so many core values in early education."

In August 2025, Early Years Professionals from Germany are coming to visit too. We regularly host Early Years Professionals from Ealing and surrounding London Boroughs for training and to share our Provision.

Councillor Josh Blacker, Ealing's cabinet member for a Fairer Start, said: "It's wonderful to see one of our outstanding schools receiving international attention. South Acton Nursery School and Children's Centre is one of many Outstanding schools in the borough – and is doing particularly great work supporting children with additional needs. I'm delighted that Headteacher Seibina and her team are getting the recognition they deserve, and I hope they take pride in knowing their good practice is being celebrated and shared beyond our borders."

**Written by Sally Carlton  
Centre Practitioner, SACC**

If you would like to visit SACC'S, website please do at **[www.southactoncc.com](http://www.southactoncc.com)**

# SUSTAINABILITY CORNER

## WELCOME TO OUR NEW SUSTAINABILITY PAGE



We're excited to launch this space dedicated to all things green and good for the planet. Here, you'll find a growing hub of awareness, education, and inspiration around sustainability. Whether you're just starting your eco-journey or you're a seasoned green thumb, there's something here for everyone.

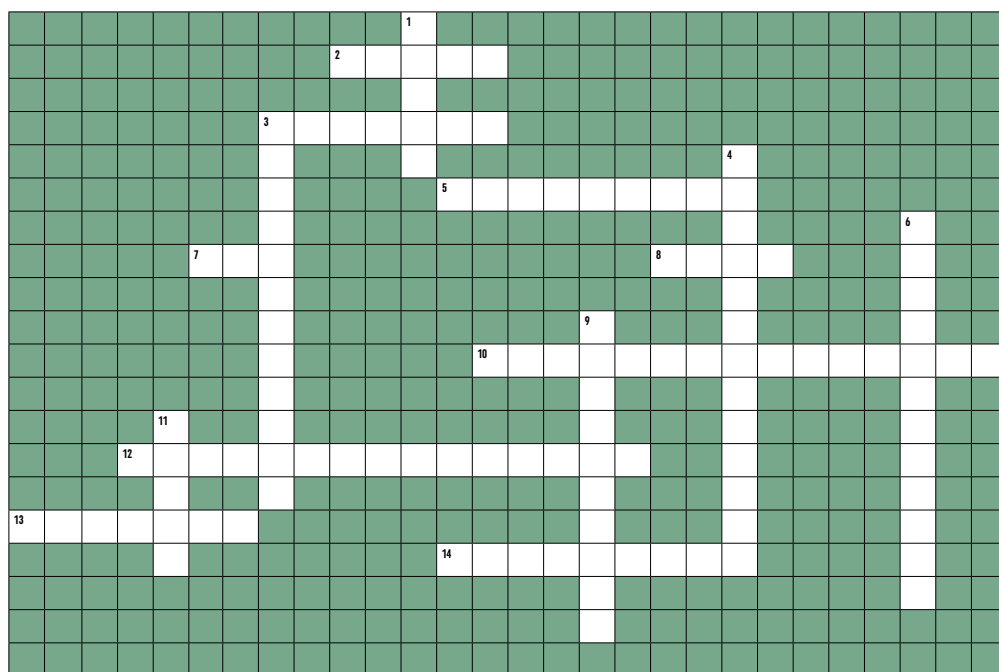
### What to expect:

- Practical tips on reducing waste, saving energy, and making eco-friendly swaps in your daily life
- Step-by-step guides for growing your own produce—no matter the size of your space

- Fun facts and myth-busting insights about sustainability and the environment
- Key awareness dates and events you can get involved in to make a difference
- Spotlights on local initiatives and success stories from our community.

**Let's learn, grow, and take action together  
- one small step at a time.**

## CROSSWORD



### Across

- The scientific word for the power source that comes from the sun (5)
- The usual weather in a place overtime (7)
- A source of energy that can be produced as they are used (9)
- The animal that pollinates flowers (3)
- Water, sun, warmth and oxygen all help plants (4)
- The action of consuming something to excess (15)
- The total amount of greenhouse gases emitted by a person, organization, or product over a period of time (15)
- The natural home or environment of an animal, plant, or other organism (7)
- The presence of a substance which has harmful effects on people and the planet (9)

### Down

- \_\_\_\_\_ Air Zone (5)
- The word the describes the preservation, protection, or restoration of the natural environment and of wildlife (12)
- The act of removing, clearing, or thinning wide areas of trees (13)
- The variety of life on Earth, including all plants, animals, and micro-organisms (12)
- The umbrella term for the type of gases depleting the atmosphere (10)
- The planet we live on (5).

**Answers:** 1. Clean 2. Solar 3. (across) Conservation 3. (down) Climate 4. Deforestation 5. Renewable 6. Biodiversity 7. Bee 8. Grow 9. Greenhouse 10. Overconsumption 11. Earth 12. Carbon Footprint 13. Habitat 14. Pollution

### STILL AVAILABLE: CULTIVATE LONDON LEAF MOULD!

Roughly 50 bags left of our rich, clean, well-rotted leaf mould from leaves fallen in 2022. Perfect for mulching, composting, or enriching your soil.

- £7 per 40L bag (approx.)
- Collection from W3 Acton
- To arrange payment and pick-up, email: [gardenservices@cultivatelondon.org](mailto:gardenservices@cultivatelondon.org)

All proceeds support our community gardening projects. Be part of the circular economy and a good cause!

Welcome to our activity page for children and families, where creativity meets community!

# CHILDREN AND FAMILIES' ACTIVITY PAGE



## SHARE YOUR BEST SUMMER SNAPS AND WIN A £25 SHOPPING VOUCHER!

Summer has arrived at Acton Gardens, and we want to see it through your eyes! We're inviting keen photographers to send in a picture that best represents Summer in our neighbourhood.

### How to enter

Take a photo that captures the fresh, vibrant spirit of Summer in Acton Gardens.

Submit your entry by email to:  
**[Yoursouthacton@lqgroup.org.uk](mailto:Yoursouthacton@lqgroup.org.uk)**.

Send your submission before the deadline  
30 September 2025 for a chance to  
win a £25 shopping voucher!



## BUG BUILDERS: CREATE YOUR OWN BUG OR INSECT

Does it glow in the dark, sing songs, or zoom through the sky with rainbow wings? What does it eat? Where does it live? Is it friendly, sneaky, or super speedy? Give it a funny name, design its superpowers, and draw what it looks like!

**Let your imagination crawl wild**



# L&Q RESIDENT ASSEMBLY – JUNE 2025

**On Saturday 21 June, more than 50 residents from across London, the South East and the North West joined L&Q colleagues for our very first Resident Assembly – a new way for residents to have their say and influence the decisions that matter most.**

## **What happened on the day?**

The event began with a chance to meet L&Q teams at themed stalls covering everything from repairs and safety to jobs, community projects and our Major Works Programme. It was a great opportunity to ask questions, learn more and connect with the people behind the services.

The main focus of the day was the roundtable discussions. Residents joined themed tables to talk about the issues that matter most to them, including:

- Keeping homes in good repair
- Building and fire safety
- Fairness and respect
- Handling complaints
- Clean and well-maintained communal areas.

Residents shared their experiences and ideas, helping us understand what's working – and what needs to improve. Molly Purcell, Communities Programming Lead, hosted the table on accountability and openness. She said:

"It was an insightful opportunity to hear directly from residents about what being an accountable and transparent landlord should look like."

Residents told us they valued the chance to speak openly:

"Although there's still a long way to go, I have the utmost confidence that change will happen."

"The staff were really responsive. What matters most is seeing real change that residents can feel every day."

## **What's next?**

We're already using feedback from the Assembly to shape a new service offer – a clear promise of what you can expect from us. This will go to our Group Board and continue to be developed with residents.

We'll keep the conversation going at our next Resident Assembly in October, where we'll work together to finalise the offer and make sure it reflects what residents truly want and need.

## **How can you get involved?**

The Assemblies are open to all L&Q residents and take place three times a year. They're a chance to:

- Share your views directly with L&Q leaders
- Help shape services and priorities
- Meet other residents and make your voice heard
- Be part of real, lasting change.

Last year, 298 residents got involved in shaping services and improving local areas.

We'd love to see you at a future Assembly or hear your ideas through our wider resident involvement programme.

To find out more and stay informed about future opportunities, visit our Resident Involvement and Accountability webpage on the L&Q website.

**"It was an insightful opportunity to hear directly from residents about what being an accountable and transparent landlord should look like."**

**The Assemblies are about working together with residents and our Group Board to understand the real impact of our services and improvement initiatives.**



**"The staff were really responsive. What matters most is seeing real change that residents can feel every day."**



## Get the latest updates from the Met straight to your inbox.

Met Engage is a free messaging service that keeps you connected to what's happening in your area. Whether its crime updates, safety advice, or news from your local policing team, you'll get the information that matters to you — when it matters most.

### Why sign up?

When you join Met Engage, you'll receive:

- Alerts about local crime, incidents and appeals
- Advice to help keep you, your family and your community safe
- News from your local police officers
- Warnings about scams and frauds
- Invitations to community meetings and events
- Chances to share your concerns and help shape local policing.

### How to sign up

Signing up takes just a few minutes and you can update your preferences at any time. Your information is secure, and we'll only use it to send you relevant updates.

### Welcome to Met Engage

We're transforming the Met to become a service that truly delivers for you.

Through our new platform Met Engage you can get to know your local officers, help shape how we police your local area and have direct access to key information and advice.

This isn't just a platform for us to tell you what we're doing in your area, it's an opportunity for you to tell us what's concerning you most so we can take action on the things that truly matter to you.



# RESIDENTS STORY



If you'd like to write an article to be published in the Acton Gardens newsletter, then please send it with any accompanying pictures to [y@lqgroup.org.uk](mailto:y@lqgroup.org.uk) with the subject header '**Residents Story**'.

The theme for this Residents Story is '**Living in Acton Gardens**'. Maybe you've lived in Acton for decades or maybe just a few years but please feel free to tell us all about what it's like living here. As always, we'll select a couple of the articles to appear to the next edition.

# HOUSING MANAGEMENT

YOUR L&Q NEIGHBOURHOOD TEAM



Your neighbourhood team is here to support residents across different phases of Acton Gardens. Below is a reminder of the team members and the areas they work in:

## A reminder on L&Qs Neighbourhood Team and their relevant roles and the phases they work on:

- **Angela James**  
Head of Housing
- **Shakira Henry**  
Area Housing Manager
- **Rochelle Mountain**  
Neighbourhood Housing Lead, Phase 7.1
- **Daniel Lamptey**  
Neighbourhood Housing Lead, Phases 1 & 2
- **Jermaine Wellesley**  
Neighbourhood Housing Lead, Phases 6.2 & 9.4
- **Celesha McKenzie**  
Neighbourhood Housing Lead, Phases 5, 6.1 & 9.1

- **Hamida Begum**  
Neighbourhood Housing Lead, Phases 3.1, 3.2 & 4
- **Jahshel Douglas**  
Neighbourhood Housing Lead, Phases 8.2, 9.2
- **Nikisha Powell**  
Housing Assistant

## Housing Management Surgeries

Residents can meet with a member of the team at Acton Gardens Community Centre during weekly housing management surgeries:



**Tuesdays: 10 am – 1 pm**

**Thursdays: 1 pm – 4 pm**

We encourage you to book an appointment, but walk-ins will be accommodated if a staff member is available.

To book an appointment or get further information, contact your designated Neighbourhood Housing Lead. You can also email the team at

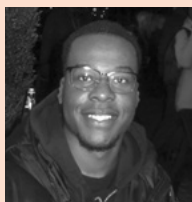
**[actongardenshm@lqgroup.org.uk](mailto:actongardenshm@lqgroup.org.uk)**

## New Faces! Welcome to our new Communities Team members



Hi Everyone! I recently joined as a Community Coordinator here in Acton Gardens and look forward to meeting you all. I hope to contribute to a happy, collective community - creating positive experiences for all!

**Nell Maguire**




I am one of the new Communities Coordinators here at Acton Gardens. With a range of experience across the built environment industry, I am excited to put my skills and knowledge to use and working closely with the community to help you shape the future of Acton Gardens.

**Ramzay Zain**



Hi all, my name is May. I'm a new Communities Coordinator here at Acton Gardens. I recently moved to London from Hong Kong and have a background in community engagement and events. I'm really looking forward to meeting you all and getting involved with the community.

**May Lam**



# HIGH ENERGIE LOW PRICE

A GYM WHERE  
YOU BELONG

FROM ONLY  
**£30.82\***  
A MONTH

JOIN ACTON TODAY  
AT **ENERGIEFITNESS.COM**  
OR CALL 020 8103 4020



**énergie  
fitness**  
where you belong...

\* Terms & Conditions Apply. See website for details.

# Get in touch!

There are lots of ways that you can get in touch with us.

- You can contact our Customer Service Centre by calling 0300 456 9996 or emailing us at [contact@lqgroup.org.uk](mailto:contact@lqgroup.org.uk)
- To speak to us about a repair you can call us on 0300 456 9996 or to tell us of a new repair, you can complete our online report a repair form on our website. You should also call this number for emergency repairs, where there is an immediate danger to you or members of the public
- If you need to speak to us about any non repairs-related issues, you can speak to your Neighbourhood Housing Lead
- Get more involved with us and help shape the services we provide to you. You can find out more about resident involvement opportunities in the 'L&Q community' section of our website.

## Complaints

We'll always aim to deliver a service that you're happy with, but if this doesn't happen, we have a formal complaints process you can use. To find out more, visit [www.lqgroup.org.uk/contact-us](http://www.lqgroup.org.uk/contact-us) or call 0300 456 9996 and we'll do our best to put things right.

L&Q is a member of the Housing Ombudsman Scheme and follows their Complaint Handling Code, so if you're still not satisfied after we deal with your complaint, you can contact the Ombudsman at [www.housing-ombudsman.org.uk](http://www.housing-ombudsman.org.uk) or by calling 0300 111 3000.



# CONTACT THE TEAM NOW

## ACTON GARDENS COMMUNITIES TEAM AND EALING COUNCIL REGENERATION TEAM

The Acton Gardens and Ealing Council Regeneration teams are available to speak with you on the phone or over email. See contact details in the table below.

TEAM	CONTACT	<b>Housing Management Surgeries</b> are now taking place, Tuesdays 10am to 1pm, Thursdays 1pm to 4pm at Acton Gardens Community Centre.  Appointments are encouraged but residents can be seen if a member of staff is available to speak with them.  Please contact your designated Neighbourhood Housing Lead for further information. <b>actongardenshm@lqgroup.org.uk</b>
<b>LB Ealing staff:</b> Lisa Tagore Amar Sokhi	<b>020 8825 9791,</b> or <b>020 8825 6829</b> <b>southactonregeneration@ealing.gov.uk</b>	
<b>L&amp;Q (Acton Gardens) Communities staff:</b> Georgia Metzger Nell Maguire May Lam Ramzay Zain	<b>y@lqgroup.org.uk</b> or <b>020 8189 3778</b>	
<b>L&amp;Q Neighbourhood team:</b> Angela James Shakira Henry Rochelle Mountain Daniel Lamptey Jermaine Wellesley Celesha Mckenzie Hamida Begum Jahshel Douglas Nikisha Powell	<b>y@lqgroup.org.uk</b> <b>0300 456 9998</b>	



### Independent Tenant and Leasehold Advisor (ITLA)

Chris McConnachie is your Independent Advisor for South Acton. ITLA appointment surgeries are held at Acton Gardens Community Centre. Contact Chris directly to make an appointment for the surgery or if you would like to discuss options for your future home.



#### You can contact Chris on:

**Phone:** 0300 008 0015

**Mobile:** 07730 624344

#### Virtual meetings:

Via Microsoft Teams, Zoom or Skype

#### Email:

**southacton@etcpartners.org.uk**

#### Dates for Appointment Surgeries at Acton Gardens Community Centre

July to December 2025

Wednesday 3 September 2025

Wednesday 1 October 2025

Wednesday 19 November 2025

Wednesday 24 November 2025

Wednesday 3 December 2025

2pm to 6pm

2pm to 6pm

2pm to 6pm

2pm to 6pm

2pm to 6pm



#### L&Q and Acton Gardens:

✉ **yoursouthacton@lqgroup.org.uk**

📍 1st Floor, Unit B, Donne Court,  
Bollo Bridge Road, Acton W3 8YG

🌐 **www.youractongardens.co.uk**