



# NEWS ABOUT THE REGENERATION OF SOUTH ACTON

January 2024  
Issue 38



The People's Throne unveiling

Welcome to the 38th edition of the Acton Gardens newsletter. Here you'll find updates to keep you involved and informed throughout the regeneration of South Acton.

In this issue:

- Central Plaza opening event
- Phasing update and plan
- Acton Gardens Community Board update
- Community Chest
- Updates from local groups and services
- Wellbeing
- Family activity
- Contact us.



Delivered in partnership



# PHASING UPDATE



In the interest of reducing our carbon footprint and offering a more sustainable and environmentally friendly newsletter, details relating to all the development phases including any updates will be provided via **Your Acton Gardens website** at [youractongardens.co.uk/phasemap](https://youractongardens.co.uk/phasemap)

Despite this change, we will continue to provide any major updates also in this newsletter.

# CENTRAL PLAZA OPENING EVENT

The opening of Central Plaza opening took place on Saturday 14 October 2023 at Acton Gardens.



The People's Throne

**Residents, L&Q and Countryside colleagues, and local politicians including Cllr Peter Mason, Leader of Ealing Council were invited to the unveiling of the People's Throne statue by former South Acton resident and accomplished artist Adebayo Bolaji.**

Adébayo Bolaji commented: "I am grateful for the opportunity to create 'The People's Throne' for the new public square at the estate where I grew up. I wanted to respond to the spirit of the space, the actual space of the park,

and also to the many positive memories I had as a child in this space. Children give us a sense of playfulness and wonder, a real sense of freedom, liberation and curiosity. I think these are qualities that we should never lose, qualities that being comfort and progress".

"I also love the symbol of the throne, but from the point of view of authority that empowers an individual and people, it really is for the people, especially since I spent a lot of time in the local community to draw inspiration for this piece."

Throughout the day we had over 200 people attending the event, and this included 149 registered residents who came with their families to enjoy the different activities on offer and to grab a slice of pizza.

The new Central Plaza comprises two new play areas which were fully utilised on the day by families from around the estate who came together to mark this special occasion.



Adébayo Bolaji



The People's Throne unveiling

Residents were also invited to join in various workshops that took place across the day.

These workshops were funded through the Acton Gardens Community Chest including an African Drumming and art workshop focusing on the theme of Windrush delivered by local charity Descendants and Young Urban Arts Foundation also had several workshops on offer including lyric writing, DJ workshops and T-Art workshops to name a few which were delivered from their Multimedia bus. We were also kept entertained by a live DJ who kept the party going until the closing of the event.

The event was a fun day for people of all ages. Feedback from residents and other professionals attending on the day has been positive not only about the layout of the new park and the vibrant colours and functionality of the Peoples Throne Statue but also about the day itself and the overall positive feeling of the Acton Gardens community coming together and neighbours getting a chance to meet each other in an open community space.

@ If anyone has any feedback or ideas for a community event please do not hesitate to contact us at [y@lqgroup.org.uk](mailto:y@lqgroup.org.uk)



The People's Throne rear elevation

# COMMUNITY BOARD MEMBERS UPDATE



The Acton Gardens Community Board is the formal resident involvement structure between the residents of Acton Gardens and South Acton and L&Q, Countryside and Ealing Council.

The Community Board oversees the regeneration of the South Acton by:

- Providing feedback on the regeneration
- Ensuring there is continued community involvement

- Encouraging participation from groups currently under-represented
- Allocating Community Chest funding for local projects
- Attending quarterly meetings
- Attending tours, training, subgroups, and consultation events for feedback
- Reviewing literature, communications and messages circulated to the community.



## UPDATE FROM THE COMMUNITY BOARD CHAIR, MATHEW HEMES

On Wednesday 8 November, the Chair and Vice Chair of the Community Board joined senior management at L&Q for an organised walkabout of Acton Gardens.

The walkabout provided the Board with a good opportunity to highlight several concerns, which senior management at L&Q reassured them would be investigated.

The Board really appreciated the time L&Q senior leadership spent with them and look forward to working collaboratively to provide impact.



If you would like to contact the Community Board, please send an email, addressed to the Community Board to [y@lqgroup.org.uk](mailto:y@lqgroup.org.uk)



# COMMUNITY CHEST



The Acton Gardens Community Chest has £50,000 available each year to fund local projects that support and benefit residents.

Applicants can apply for up to £5,000 funding to support delivery of their project. To date, we've funded over 100 projects, including health and wellbeing, art, environmental, educational support, community days, support groups and sports projects.



If you are interested in applying for funding to benefit your community, please visit [www.yoursouthacton.co.uk/community-chest](http://www.yoursouthacton.co.uk/community-chest)



If there is a project you would like to see funded, or if you have an idea for how we can improve our current model, please do get in touch on: [y@lqgroup.org.uk](mailto:y@lqgroup.org.uk)



Details about some of the projects we've funded can be found at [www.yoursouthacton.co.uk/community-chest](http://www.yoursouthacton.co.uk/community-chest)

## Do you live in Acton Gardens?

## Are you passionate about the area you live in?

## Do you want to meet people in your neighbourhood?

This is the perfect opportunity for anyone passionate about where they live and want to have an input in shaping the future development of the local community.

### Why join the Community Board?

The board makes a real difference to the regeneration at Acton Gardens. The Community Board meets every quarter to discuss a variety of topics including future phase design consultations, current construction updates, communications strategies, and the allocations of funds to community projects.

### How are Board members elected?

Board member elections are held every year at the AGM and we would welcome expressions of interest from residents who are interested in joining the board.

For information and how to apply, please contact the team at [y@lqgroup.org.uk](mailto:y@lqgroup.org.uk)

**All applicants will be invited to the AGM where Community Board Members vote on who should join. Dates will be publicised ahead of the meeting.**

This is a great opportunity to make a real difference in your community and appropriate training will be available to new members.

# BOLLO BROOK YOUTH CLUB UPDATE

Since you last heard from us, we have been very busy working on several projects.



We had a packed summer, running our Holiday Activity and Food programmes for 7-16 years olds, which feels like ages ago now since the nights are drawing in.

Since then, we have showcased our most recent film, Tea Talks, at the Horniman Museum in South East London.

The film explores the conversations that take place in the tea houses and restaurants across Acton and Park Royal and can be watched on our website: [bollostudios.cargo.site](http://bollostudios.cargo.site)

Our short film **Bando** has also finally been released on YouTube: [www.youtube.com/watch?v=62yD24XANf8&t=15s](https://www.youtube.com/watch?v=62yD24XANf8&t=15s)

Over the past year, we have been working with the Institute of Developmental Studies on their project Living Roots.

As part of this, young people at the centre have made a series of art pieces, including customising a moped to reflect things that impact on their wellbeing positively and negatively, and making a podcast. The project culminated at a launch event at ActOne Cinema, with live music and spoken word.

# ACTON GARDENS COMMUNITY CENTRE

## KNIT & NATTER COMMUNITY CLUB.

Acton Gardens Community Centre runs a community Knit & Natter club on:

**Thursdays from  
4:30pm to 6:30pm.**

The group have been working on the knitting project for the Preemies (very premature babies) and making woolly hats and scarves for the homeless. Everyone's welcome to Knit & Natter, the group also welcomes contributions with wool for the Centre.



**ACTON GARDENS** | COMMUNITY CENTRE

### Knit & Knatter Community Club

Come and join your local knitting club and make some new friends.

**Time:** Thursdays 4.30pm to 6.30pm  
**Cost:** £1-£3 per week (or what you want to pay)  
All monies go towards materials and refreshments.

**Where:** acton Gardens Community Centre, Unit A  
Munster Court London W3 8UU

Contact us for more information or to register your interest:  
Email: [info@actongardens.community](mailto:info@actongardens.community)  
Phone: 020 8075 5240  
Website: [www.theagcc.co.uk](http://www.theagcc.co.uk)

Materials and equipment provided, but feel free to bring your own.

Supported by  London Development Trust



# IN THE NEWS



## ACTON GREEN WASTE SOLUTIONS



### A local solution to domestic green waste is coming to the neighbourhood!

Cultivate London has launched a fundraising campaign to collect green waste from the local community and process this within a purpose-built biodigester to produce liquid fertiliser and compost. These products will be re-used on the site supporting a growing system that will

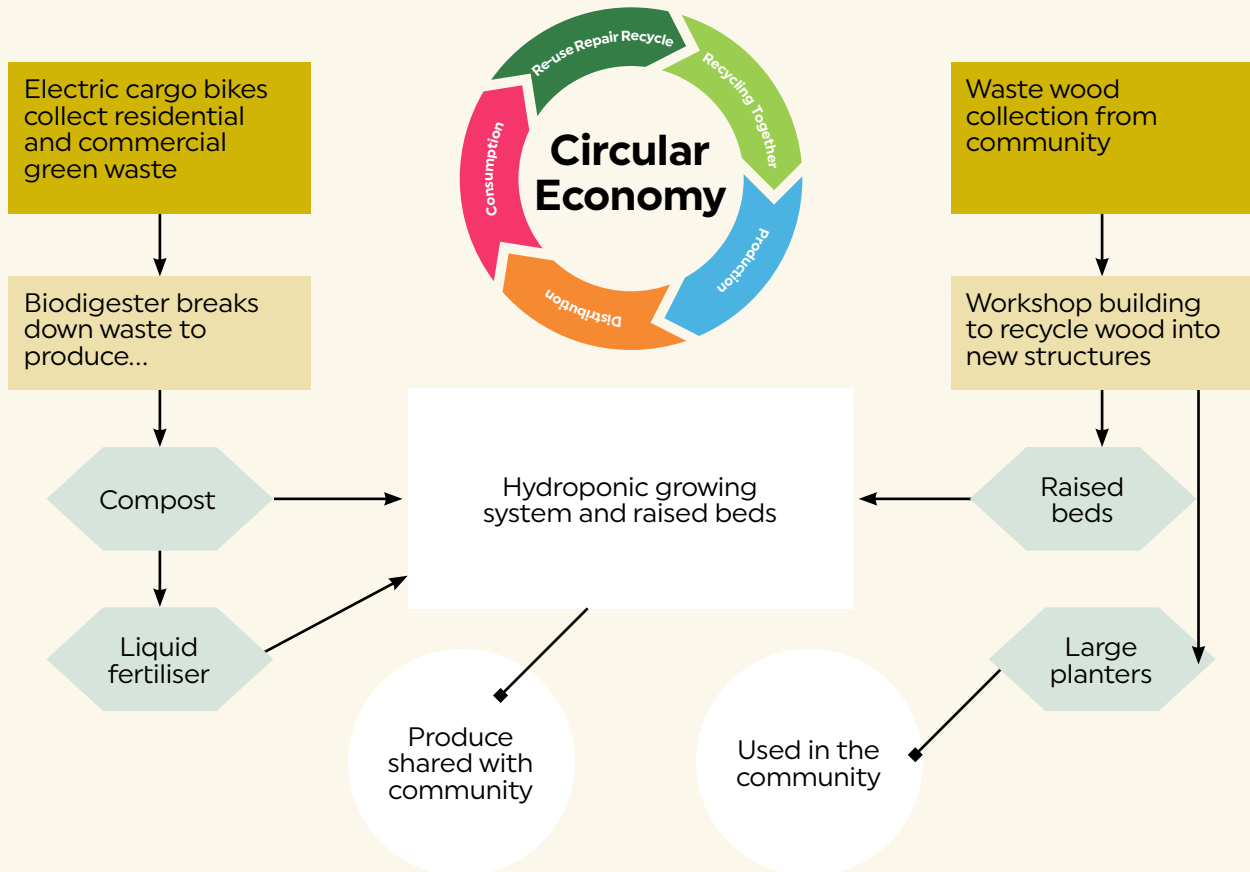
produce vegetables, herbs, and salads within a mix of open and hydroponic growing systems. The produce will be shared among volunteers and local partners that have helped provide the resources. Seeds will be harvested and shared at satellite gardens and associated groups.

A purpose-built workshop will also harvest waste timber and structures and house a making shed to create planters, beds, garden furniture and other upcycled objects.





## Action Circular Economy: Green waste solutions



For more information and donations scan the barcode, no matter the size of the contribution, every little helps!



## NEW STRUCTURES FOR BERRYMEDE COMMUNITY GARDENS



As a 2nd year anniversary present, our urban kitchen gardens right in the Acton Gardens Primary school playgrounds, received a new greenhouse and a new shed by the kindness of nearby businesses.

Thanks to B&Q Acton who provided and built the greenhouse and Countryside who provided the shed, these gardens can continue to operate in safety providing storage for tools and shelter for vegetables and flowers-to-be.



If you are interested in joining local free walk-in gardening sessions, please contact [communitygardens@cultivatelondon.org](mailto:communitygardens@cultivatelondon.org) any level of experience is welcome, also suitable for any age and families.

# UPDATE FROM SOUTH ACTON CHILDRENS CENTRE

**At South Acton Children's Centre and Nursery School, we ensure that Cultural Capital is something we embed into our practice through enriching experiences for our children everyday.**

Cultural Capital isn't new – it's been around for always – and it comes from the study of society and relationships, culture and social interactions.

It is important to know that everyone has cultural capital – our knowledge, skills, behaviours that we build up over a period of time through different experiences and opportunities. Some definitions of Cultural capital reflect on one of the Early Years core principles of the Unique Child; **'Every child is a unique child who is constantly learning and can be resilient, capable, confident and self-assured'**.

Cultural capital is the essential knowledge that children need to prepare them for their future success. It is about giving children the best possible start to their early education.

For us at South Acton Children's Centre and Nursery School, rather than thinking of cultural capital as a thing that must be 'given' or 'taught', it is more helpful to think first and foremost about the cultures, languages and traditions that children and their families bring, and how we might value and celebrate this. Our goal is to create a curriculum that is ambitious and aspirational for all and that will enhance the cultural capital of every child and family.

Over the recent months, the children have been enjoying learning about each other's lives and looked back in history at people who have been influential as we celebrated Black History Month, Diwali, Remembrance Day, Firework Night...and so many more celebrations that are interwoven into all of us culturally.



**énergie Fitness**  
where you belong...

**OFFER  
ENDS SOON!**

**GYM**

**'TIL JANUARY  
FOR JUST**

**£1**

**CODE: CWE1**

**Join us today at  
[energiefitness.com](https://energiefitness.com)**

# RESIDENT SURGERIES



Every month we are holding surgeries for all residents to meet the Acton Gardens Housing Management Team and discuss your housing matters.

This is a drop in surgery so you can attend anytime between the hours below.

## Resident Surgeries will be held:

Every Tuesday

10am – 1pm

Every Thursday

1pm – 4pm

For more information or to make an appointment please contact L&Q via Tel: **0300 456 9998** or visit the community centre. Alternatively, you can also contact your Neighbourhood Housing lead.



Delivered in partnership





# WELLBEING

## STAY ACTIVE

We recently visited StayActive4Life's Strength and Balance exercise class for older adults which takes place at St Mary Church, Acton every **Friday, 11:45am to 12:30pm**. We had the opportunity to participate in the 45-minute session of strength and balance which got our hearts racing and body moving too to some fun tunes.



Following the exercise session, members have the option to stay for a social with tea and biscuits. Everyone welcomed us at the social and was happy to spend some time talking to us about how they keep well, especially over the winter months.

Here are some tips they wanted to share

- Keep active- find different ways to move your body both indoors and outdoors if you can
- Keep warm at home, make sure your windows are closed properly
- Wrap up warm
- Eating healthy – make batches of homemade soups and freeze these
- Joining social groups like this one.

Group Member Linda said the groups have made a big difference both socially and physically. After damaging her back, she started attending these classes regularly and after some time, she was advised that she didn't need to have an operation. Linda would recommend these movement classes to all and encourages people to try the different sessions taking place around the Borough.

@ For more information on the Strength and Balance classes, please email Aran Summers at: [admin@stayactive4life.co.uk](mailto:admin@stayactive4life.co.uk)

Mencap have also devised an accessible guide of the NH'S Staying Well Winter. To access this, visit: [www.mencap.org.uk/sites/default/files/2017-11/SWTW2017\\_EasyReadLeaflet\\_WebAccessible.pdf](http://www.mencap.org.uk/sites/default/files/2017-11/SWTW2017_EasyReadLeaflet_WebAccessible.pdf)

## COMMUNITY HUBS TO HELP THE COST OF LIVING.

There's so much more that you can do at your local library. Did you know that Ealing has four hubs across the borough that have been set up to help with the cost-of-living crisis?

At your local community hub, you can get support to access the internet and there are trained advisors available to support you with things like form filling, offer advice on financial support and benefits. They can also signpost you to other local organisations to help you with your circumstance.

You can also use the hubs as a place to relax, read a book and if you or your family members haven't yet joined a library, there's an opportunity for you to do so.

There are also family-friendly activities available.

@ To find out more about these activities and events, please visit: [www.ealing.gov.uk/info/201219/libraries/2412/events](http://www.ealing.gov.uk/info/201219/libraries/2412/events)

Below is the list of the four Community Hubs and where they can each be found.

- Acton Library, Everyone Active, Acton Centre, W3 6NE
- Ealing Central Library, Ealing Broadway Shopping Centre, W5 5JY
- Northolt Library, Church Road, UB5 5AS
- Southall Library, The Dominion Centre, UB2 4BQ.



## KEEPING YOUR BIKE SAFE



### Protect your bike from theft

Here are some tips to help you keep your bike safe

- Register your bike for free: [www.bikeregister.com](http://www.bikeregister.com)
- Note down the **bike frame number** (normally found underneath the bike between the pedals or where the back wheel slots in) and your **Bike Register number**. The police use these to identify your bike (if they're able to find it)
- Take photos of your bike. It will be easier to show your bike to the police and insurers, and provide proof that it was yours
- Double lock it with two locks – the frame and both wheels
- Add your bike to your home contents insurance
- Keep the receipt if you still have it. If stolen, insurers will want proof of purchase along with the **crime reference number** that the police give you once you've reported it stolen.

More info on the Met Police website.

You can report your bike as stolen by calling the police on **101** or online: [www.met.police.uk/ro/report](http://www.met.police.uk/ro/report)

Do also check our website [www.youractongardens.co.uk](http://www.youractongardens.co.uk) regularly for future dates on bike marking sessions by the Safer Neighbourhood Team where you can have your bike marked and registered.

## PARCELS AND DELIVERIES

### Please may we remind you to avoid having parcels or deliveries made when you are not at home.

We have received reports of parcels going missing where they have been left by delivery drivers in communal hallways.

We would also request that you make sure the door closes behind you to avoid any opportunists getting into the building and picking up any of your parcels or expensive gifts. We have CCTV monitoring communal hallways and continue to work with the Police regarding specific incidents but please arrange a click-and-collect from a local shop or meeting point to avoid this disappointment. We want you to enjoy the holiday season and not be out of pocket for this reason.

If a parcel has been stolen, your allocated Neighbourhood Housing Lead (NHL) can assist with providing CCTV footage, assuming footage is available, if the matter has been reported to the Police.



## RESIDENTS STORY

If you'd like to write an article to be published in Acton Gardens newsletter, then please send it with any accompanying pictures to [y@lqgroup.org.uk](mailto:y@lqgroup.org.uk) with the subject header '**Residents Story**'.

The theme for this Residents Story is 'Living in Acton Gardens'. Maybe you've lived in Acton Gardens for centuries or maybe just a few years but please feel free to tell us all about what it's like living in Acton Gardens. As always, we'll select a couple of the articles to appear to the next edition.



# CONTACT THE TEAM NOW

## ACTON GARDENS REGENERATION TEAM AND EALING COUNCIL REGENERATION TEAM

The Acton Gardens and Ealing Council Regeneration teams are available to speak with you on the phone or over email. See contact details in the table below.

TEAM	CONTACT
<b>LB Ealing staff:</b> Leon Joseph Kuldip Mann Amar Sokhi	020 8825 9791, 020 8825 7409 or 020 8825 6402 southactonregeneration@ealing.gov.uk
<b>L&amp;Q (Acton Gardens) Regeneration staff:</b> Georgia Metzger Molly Purcell	y@lqgroup.org.uk 020 8189 1877
<b>L&amp;Q Neighbourhood team:</b> Shakira Henry Rochelle Mountain Daniel Lamptey Jermaine Wellesley Celesha Mckenzie Nikisha Powell Ayan Ali	y@lqgroup.org.uk 0300 456 9998

### Housing Management

**Surgeries** are now taking place, Tuesdays 10am to 1pm, Thursdays 1pm to 4pm at Acton Gardens Community Centre.

Appointments are encouraged but residents can be seen if a member of staff is available to speak with them.

If you would like to book an appointment, please contact your designated Neighbourhood Housing Lead for further information or to book and appointment.



### Independent Tenant & Leasehold Advisor (ITLA)

Chris McConnachie is your Independent Advisor for South Acton. ITLA appointment surgeries are held at Acton Gardens Community Centre. Contact Chris directly to make an appointment for the surgery or if you would like to discuss options for your future home.



#### You can contact Chris on:

Phone: 0300 008 0015

Mobile: 07730 624344

#### Virtual meetings:

Via Microsoft Teams, Zoom or Skype

#### Email:

southacton@etcpartners.org.uk

#### Dates for Appointment Surgeries at Acton Gardens Community Centre

January to July 2024

Thursday 11 January 2024

Thursday 8 February 2024

Thursday 7 March 2024

Thursday 11 April 2024

Thursday 3 May 2024

Thursday 6 June 2024

Thursday 4 July 2024

2pm to 6pm

2pm to 6pm

2pm to 6pm

2pm to 6pm

2pm to 6pm

2pm to 6pm

2pm to 6pm



### L&Q and Acton Gardens:

0300 456 9998

yoursouthacton@lqgroup.org.uk

1st Floor, Unit B, Donne Court,  
Bollo Bridge Road, Acton W3 8YG

www.youractongardens.co.uk